

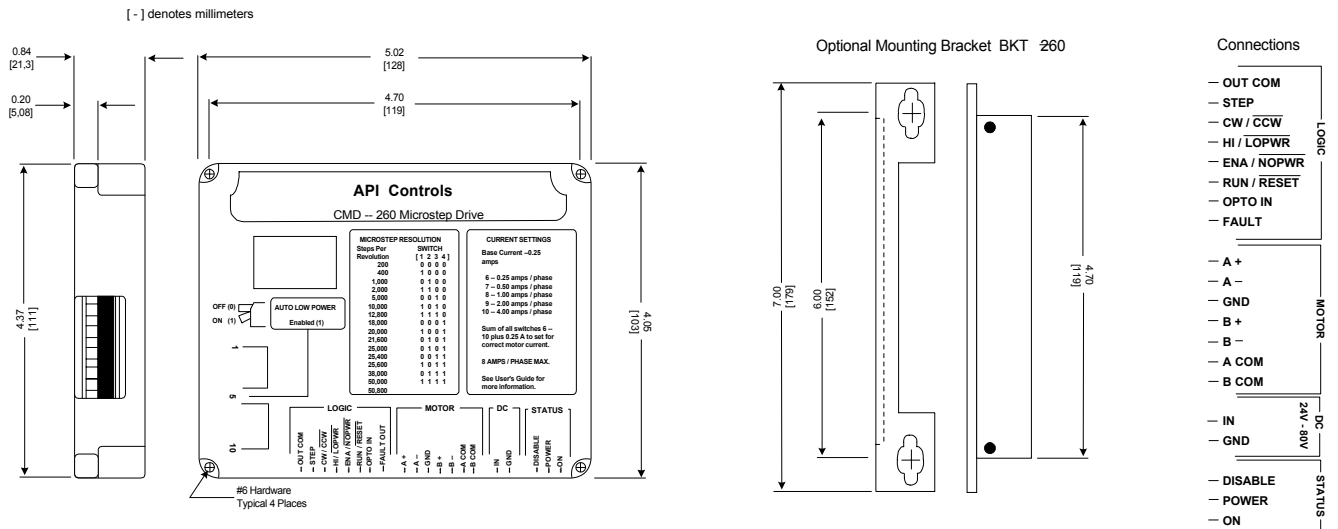
## DESCRIPTION

Each CMD-260 includes an integral heatsink and plug-type connector for motor, logic, and power connections. DIP switches select step resolution, current settings, and stand-still current reduction. Status LEDs indicate drive disabled and power on.

## INSTALLATION STEPS

- Configure current switches for motor selected.
- Configure microstep resolution switch settings.
- Wire logic inputs, + 5 VDC supply and motor connections.
- Mount drive in open air flow.
- Wire 24 – 80 VDC and supply power.
- Supply input signals to operate.

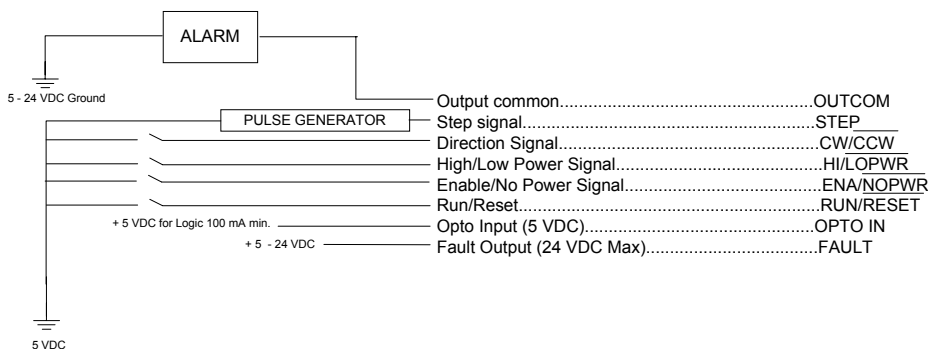
## DIMENSIONS



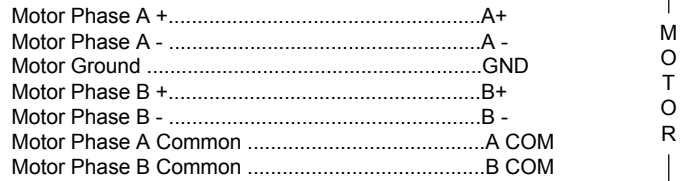
Subject to change without notice.

## LOGIC CONNECTIONS (8 PINS)

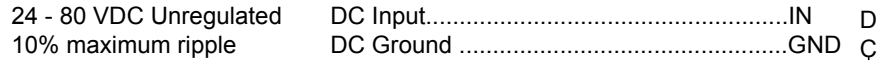
- LOGIC INPUTS**..... Optically isolated. TTL compatible. User must sink 10 mA minimum to trigger input logic.
- STEP INPUT**..... Requires 0.5 microsecond minimum width, 1 MHz max. pulse rate, steps on trailing edge.
- FAULT OUTPUTS**..... Sinking output to OUTCOM, 5 - 24 FDC, 60 mA max. Disable LED on. Over-current - Protected from short circuit - phase-to-phase, phase-to-ground. Over-temperature - internal air temp exceeds 140° F (60° C). Under-voltage - DC voltage drops below 22 VDC (cycle power to reset drive).



# MOTOR CONNECTIONS (7 PIN)

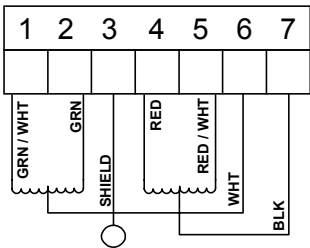


## POWER INPUT 2 PIN KEYED CONNECTOR



### BASIC MODEL MOTORS

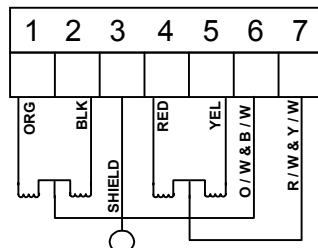
MOTOR CONNECTOR



6-LEAD MOTOR (SERIES)  
DRIVE CURRENT = MOTOR I<sub>PHASE</sub>\*0.707

### COMPLETE MODEL MOTORS

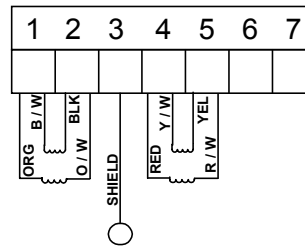
MOTOR CONNECTOR



8-LEAD MOTOR (SERIES)  
DRIVE CURRENT = MOTOR I<sub>PHASE</sub>\*0.707

### COMPLETE MODEL MOTORS

MOTOR CONNECTOR



8-LEAD MOTOR (PARALLEL)  
DRIVE CURRENT = MOTOR I<sub>PHASE</sub>\*1.414

## SYSTEM SELECTIONS / MOTOR DIMENSIONS

Motor Model	Static Torque oz-in (N-m)	Motor Width in. (mm)	Motor Length in. (mm)	Current Setting – Series [1234567890]
M231-03	60 (0.42)	2.23 (57)	2.00 (51)	xxxxx01000
M232-09	100 (0.71)	2.23 (57)	3.25 (83)	xxxxx00110
M239-09	150 (1.06)	2.23 (57)	4.00 (102)	xxxxx00110
M341-09	150 (1.06)	3.35 (85)	2.45 (82)	xxxxx00110
M342-09	300 (2.12)	3.35 (85)	3.70 (93)	xxxxx00110
M343-14	400 (2.82)	3.35 (106)	5.31 (135)	xxxxx01001
MT230-04	50 (0.35)	2.25 (57)	1.60 (41)	xxxxx00100
MT231-07	100 (0.71)	2.25 (57)	2.06 (52)	xxxxx00010
MT252-06	150 (1.06)	2.25 (57)	3.10 (79)	xxxxx00010

