

PROPRIETARY

The contents of this document are PROPRIETARY to INDUSTRIAL DEVICES CORPORATION and are not to be disclosed to others or used for purposes other than intended without the written approval of INDUSTRIAL DEVICES CORPORATION.

REV	DESCRIPTION	DATE	REVISED	APPROVED
A	DCN 8520, NEW RELEASE	13MAY96	IT	

ADJUST TRANSPORT BELT TENSION AS FOLLOWS:

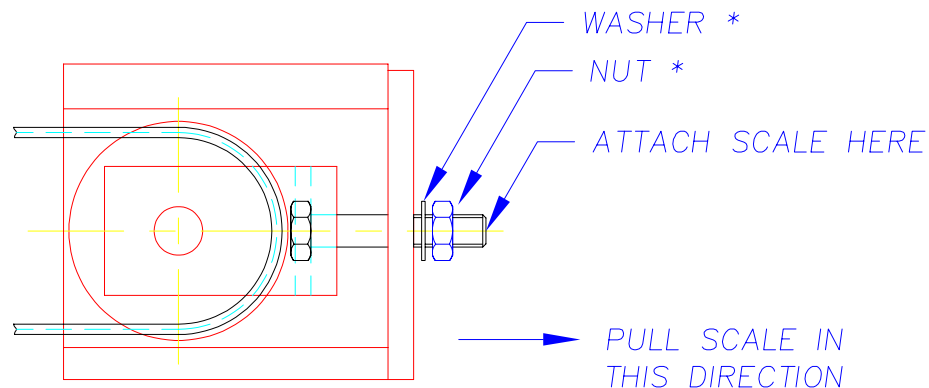
- R2 20lbs
- R3 40lbs
- R4 60lbs

USE A SPRING SCALE TO MEASURE PULL OFF FORCE ON THE ADJUSTING YOKE AS FOLLOWS:

- R2 40lbs
- R3 80lbs
- R4 120lbs

NOTE: THE READING ON THE SCALE SHOULD BE DOUBLE BECAUSE IT IS MEASURING THE FORCE BEING APPLIED TO THE TOP AND BOTTOM PART OF THE BELT.

* (THE WASHER UNDER THE ADJUSTING NUT SHOULD BECOME FREE, WHEN DESIRED AMOUNT OF FORCE IS APPLIED.)



INDUSTRIAL DEVICES CORPORATION

NOVATO, CALIFORNIA 94949-5704

NGR PKT NO. -----	MATERIAL -----	DRAWN I. THOMSON	13MAY96	INSTRUCTION SHEET, RODLESS BELT TENSION	
		CHECKED			
LESS OTHERWISE SPECIFIED DIMENSIONS ARE IN INCHES TOLERANCES ARE: ACTIONS DECIMALS ANGLES 1/32 .XXX ± 0.005 1/2° .XX ± 0.015	FINISH -----	ISSUED		A	DWG. NO. 000AS123
		DO NOT SCALE DRAWING		SCALE: 1X	SHEET 1 OF 1