

Kollmorgen Automation Suite

PDMM and PCMM Webserver



Document Edition: F, February 2016

Valid for KAS Software Revision 2.10

Part Number: 959719

Keep all manuals as a product component during the life span of the product.
Pass all manuals to future users / owners of the product.

Trademarks and Copyrights

Copyrights

Copyright © 2009-2016 Kollmorgen™

Information in this document is subject to change without notice. The software package described in this document is furnished under a license agreement or non-disclosure agreement. The software may be used or copied only in accordance with the terms of those agreements.

This document is the intellectual property of Kollmorgen™ and contains proprietary and confidential information. The reproduction, modification, translation or disclosure to third parties of this document (in whole or in part) is strictly prohibited without the prior written permission of Kollmorgen™.

Trademarks

KAS and AKD are registered trademarks of [Kollmorgen™](#).

SERVOSTAR is a registered trademark of Kollmorgen™.

[Kollmorgen™](#) is part of the [Danaher Motion](#) company.

Windows® is a registered trademark of Microsoft Corporation

EnDat is a registered trademark of [Dr. Johannes Heidenhain GmbH](#).

[EtherCAT®](#) is registered trademark of [Ethercat Technology Group](#).

[PLCopen®](#) is an independent association providing efficiency in industrial automation.

INtime® is a registered trademark of [TenAsys® Corporation](#).

Codemeter is a registered trademark of [WIBU-Systems AG](#).

All product and company names are trademarks™ or registered® trademarks of their respective holders. Use of them does not imply any affiliation with or endorsement by them.

Kollmorgen Automation Suite is based on the work of:

- [AjaxFileUpload](#), software (distributed under the MPL License).
- [Apache log4net](#) library for output logging (distributed under the Apache License).
- bsdtar and libarchive2, a utility and library to create and read several different archive formats (distributed under the terms of the BSD License).
- bzip2.dll, a data compression library (distributed under the terms of the BSD License).
- [Curl](#) software library
- [DockPanel Suite](#), a docking library for .Net Windows Forms (distributed under the MIT License).
- [FileHelpers](#) library to import/export data from fixed length or delimited files.
- GCC Canadian Cross Compiler is used by the KAS IDE. The GCC Canadian Cross Compiler is distributed under the [terms](#) of the GNU General Public License (<http://www.gnu.org/licenses/gpl.html>). The GCC Canadian Cross Compiler source files, copyright notice, and readme are [available on KDN](#).
- GNU gzip Copyright (C) 2007 Free Software Foundation, Inc. Copyright (C) 1993 Jean-loup Gailly. This is free software. You may redistribute copies of it under the terms of the GNU General Public License <<http://www.gnu.org/licenses/gpl.html>>. There is NO WARRANTY, to the extent permitted by law. Written by Jean-loup Gailly. (www.gnu.org) is used by the PDMM/PCMM (distributed under the [terms](#) of the GNU General Public License <http://www.gnu.org/licenses/gpl-2.0.html>).
- GNU Tar Copyright (C) 2007 Free Software Foundation, Inc. License GPLv2+: GNU GPL version 2 or later <<http://gnu.org/licenses/gpl.html>> This is free software: you are free to change and redistribute it. There is NO WARRANTY, to the extent permitted by law. Written by John Gilmore and Jay Fenlason. (www.gnu.org) is used by the PDMM/PCMM (distributed under the [terms](#) of the GNU General Public License <http://www.gnu.org/licenses/gpl-2.0.html>).
- Icons provided by [Oxygen Team](#), (distributed under the [terms](#) of the GNU Lesser General Public License <https://www.gnu.org/licenses/lgpl.html>).
- [jQuery.Cookies](#), a Javascript library for accessing and manipulating HTTP cookies in the web browser (distributed under the MIT License).
- [jquery-csv](#), a library for parsing CSV files in javascript (distributed under the MIT license <http://www.opensource.org/licenses/mit-license.php>).
- [jQuery File Tree](#), a file browser plugin (distributed under the MIT License).

- [jQueryRotate](#), a plugin which rotates images (img html objects) by a given angle on web pages (distributed under the [MIT License](#) MIT License, <http://opensource.org/licenses/mit-license.php>).
- JsonCpp software (distributed under the MIT License – [see terms](#) see <http://json-cpp.sourceforge.net/LICENSE> for terms).
- [LZMA SDK](#) (<http://www.7-zip.org/sdk.html>), used to compress crash dump information (available as public domain).
- [Mongoose](#) v3.7, an embedded web server library (distributed under the MIT License).
- [MVVM Light Toolkit](#) components for Model – View –ViewModel patterns with Windows Presentation Foundation (distributed under the MIT License).
- [pugixml](#), an XML and XPath parsing library (distributed under the MIT License).
- [Qwt](#) project (distributed under the terms of the GNU Lesser General Public License).
- [U-Boot](#), a universal boot loader is used by the AKD-PDMM (distributed under the [terms](#) of the GNU General Public License, <http://www.gnu.org/licenses/gpl-2.0.html>). The U-Boot source files, copyright notice, and readme are available on the distribution disk that is included with the AKD-PDMM.
- [ZedGraph](#) class library, user control, and web control for .NET (distributed under the LGPL License).
- [Zlib](#) software library
- Zlib1.dll, a data compression library (distributed under the terms of the BSD License).

All other product and brand names listed in this document may be trademarks or registered trademarks of their respective owners.

Disclaimer

The information in this document (Version G published on 2/17/2016) is believed to be accurate and reliable at the time of its release. Notwithstanding the foregoing, Kollmorgen assumes no responsibility for any damage or loss resulting from the use of this help, and expressly disclaims any liability or damages for loss of data, loss of use, and property damage of any kind, direct, incidental or consequential, in regard to or arising out of the performance or form of the materials presented herein or in any software programs that accompany this document.

All timing diagrams, whether produced by Kollmorgen or included by courtesy of the PLCopen organization, are provided with accuracy on a best-effort basis with no warranty, explicit or implied, by Kollmorgen. The user releases Kollmorgen from any liability arising out of the use of these timing diagrams.

This page intentionally left blank.

1 Table of Contents

1 Table of Contents	5
2 Using the KAS Web Server	7
2.1 Web Server Home Page	7
2.1.1 Security	8
2.1.1.1 Timeout After Inactivity	9
2.1.2 User Authentication	9
2.1.2.1 Logging In	9
2.1.2.2 Logging Out	9
2.1.2.3 Changing the Password	10
2.2 KAS Application	11
2.2.1 Axis	11
2.2.2 Log Configuration	12
2.2.3 Log Data	13
2.2.3.1 Log Message Content	14
2.2.3.2 PDMM and PCMM Log Files	15
2.2.3.3.1 Log File Naming Convention	15
2.2.4 User Data	15
2.3 Web Server Settings	16
2.3.1 Firmware Tab (PDMM and PCMM Only)	16
2.3.1.1 Upgrading the Firmware	16
2.3.1.2 Recovery Mode (PDMM or PCMM Only)	17
2.3.2 Network Tab (PDMM or PCMM Only)	17
2.3.2.1 About the Rotary Switch	18
2.3.2.2 Change the IP Address	18
2.3.3 File System Tab	18
2.3.3.1 Reset to Factory Settings	19
2.3.4 SD Card Tab (PDMM or PCMM Only)	19
2.3.4.1 SD Card Actions	19
2.3.5 User Account	19
2.3.5.1 I forgot my password	20
2.4 Backup & Restore from the Web Server	21
2.4.1 Backup Tab	21
2.4.2 Restore Tab	22
2.4.3 Import/Export	22
2.5 Diagnostic (PDMM and PCMM Only)	23
2.5.1 Errors and Alarms	23
2.5.2 Hardware Status	23
2.5.3 Crash Reports	24
3 EtherCAT Devices Backup & Restore - In Depth	25
3.1 EtherCAT Devices Backup and Restore	25
3.1.1 EtherCAT Devices Backup	25
3.1.1.1 Backup Steps	26
3.1.2 EtherCAT Devices Restore	26
3.1.2.1 Steps	27

3.1.3 AKD Backup/Restore Compatibility	27
3.1.4 Autostart with Replacement drives and the unique ID	28
3.1.5 Export/Import EtherCAT Devices Backup	29
3.1.5.1 Export Procedure	29
3.1.5.2 Import Procedure	29
3.1.6 EtherCAT Devices Backup/Restore Limitations	29
3.1.7 Troubleshooting EtherCAT Devices Backup/Restore	30

2 Using the KAS Web Server

Kollmorgen Automation Suite™ comes with a web server that allows you to perform the following operations:

- Read information about the controller (model, Runtime/firmware version, version of your KAS application)
- Interact with your application (Start and Stop your KAS application)
- View real and simulated axes
- See all the log messages
- Upgrade the controller firmware ‡
- Change the IP address ‡
- View system diagnostics including storage space, memory and CPU temperature ‡
- Reset the controller to factory settings

‡ PDMM and PCMM only

The web server may be accessed two ways:

1. Open a web browser and enter the controller's IP address.
2. From the Controller node in the Project tree in the KAS IDE.
 - Double-click the Controller node
 - Select "Access Webserver" from the right-mouse menu.

NOTE

If you do not know the IP address assigned to the controller:

1. Press B3 once. The 7-segment display will flash the letters I and P.
2. Press B2 to select the IP option. The 7-segment display will show the IP address.

The web server consists of the home page, and the [KAS Application](#), [Settings](#), Backup & Restore, [Diagnostics](#) and Help tabs. The Help tab is a link which opens the Web Server manual.

The web server consists of a home page, the [KAS Application](#) tab and Help. The Help tab is a link which opens the PAC Web Server manual.



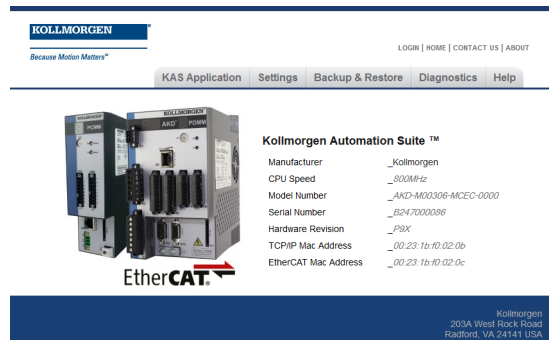
Figure 3-1: The Webserver Tabs as seen on an PDMM webserver.

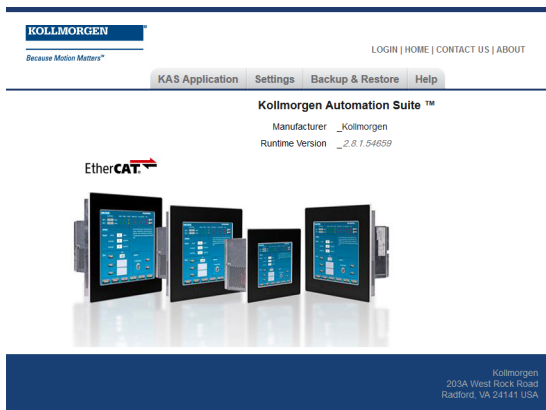
TIP

Browser Requirements: We recommend using [Firefox 11](#), [Google Chrome](#), or [Internet Explorer 9](#) or later for accessing the web server.

2.1 Web Server Home Page

To access the KAS web server home page, enter the controller's IP address.





This page provides an overview of the device including:

- Manufacturer
- CPU Speed ‡
- Model Number ‡
- Serial Number ‡
- Hardware Revision ‡
- TCP/IP MAC Address ‡ — a unique value associated with the TCP/IP network adapter that uniquely identifies the adapter on a LAN.
- EtherCAT MAC Address ‡ — a unique value associated with the EtherCAT network adapter that uniquely identifies the adapter on an EtherCAT network.

‡ PDMM and PCMM only

NOTE

Please note that any reference to PDMM or PCMM refers to both the 800MHz and the 1.2GHz variants, unless otherwise noted.

2.1.1 Security

Some parts of the web server are locked in order to protect critical operations from unauthorized users. Simply log into the web server to enable access to the locked functions. See "User Authentication" (→ p. 9) for more information.

NOTE

Functions will not be locked if you access the web server through the IDE. Doing so automatically grants administrator access.

The functions which are locked are:

- KAS Application Tab
 - Start/Stop/Cold Start an application
 - "Clear User Data"
 - "Clear all Errors"
 - Configure 'Auto-start'
- Settings tab
 - Firmware upgrade -->'Choose File' &'upgrade' ‡
 - Reboot ‡
 - "Reset to Factory Settings"
 - SD card Format ‡
 - Change password
 - Change the network settings (IP address) ‡

- Backup & Restore
 - Backup Controller ‡
 - Backup & Restore PDMM and PCMM only
 - Restore Controller ‡
 - Export Backup
 - Choose File & Replace Backup
- Diagnostics tab ‡
 - Reboot the controller
 - Clear Errors and alarms
 - Clear Crash dump

‡ PDMM and PCMM only

2.1.1.1 Timeout After Inactivity

To prevent misuse, if the webserver has been idle (no keyboard activity or mouse clicks) for 20 minutes, the user account will be automatically logged out. A dialog box will open to alert you that the session has timed out.

NOTE

The idle logout only occurs if you've logged into the webserver with a web browser. Logging in through the KAS IDE will never time out.

2.1.2 User Authentication

2.1.2.1 Logging In

Logging into the web server is required to prevent unauthorized access or changes. This is accessed from the **LOGIN** link at the top of all web server pages. Clicking the link brings up a form to enter user credentials.

Enter the password to log in. The factory default password is `administrator`. This can be changed after logging in.

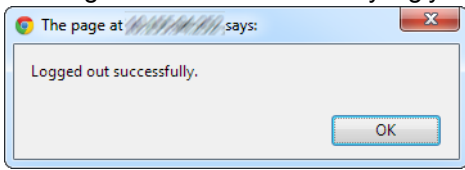
NOTE

- As there is only one user Administrator, "administrator" is the default user name.
- You must re-enter the password each time you log in; the entered password is not stored in the login form.
- Accessing the webserver from the IDE automatically logs you in as *administrator*.

When you are successfully logged in, the user name will appear in the top-right corner of all web server screens.

2.1.2.2 Logging Out

After successfully logging in, the menu in the top right corner of the web server contains a link to **LOGOUT**. Clicking this link will immediately log you out of the web server, and informs you of this.




2.1.2.3 Changing the Password

The user password is managed from the User Account section of the Settings tab. See "User Account" (→ p. 19) for more information.

2.2 KAS Application

This tab allows you to:

- Display general information about your project that is currently loaded on the controller
- Start and stop the motion
- Display the Axes run by the controller from the "Axis" (→ p. 11) tab
- Manage log messages from the "Log Configuration" (→ p. 12) and "Log Data" (→ p. 13) tabs
- Display User Data present on the controller from the "User Data" (→ p. 15) tab

Item	Description
Version of KAS App	This label provides information about the name and version number of the application that is in the controller. The format is <project_name>:<version>. The application's source code may be downloaded to the local computer if it is present on the controller. This is accomplished by clicking on the download icon (). This icon is found by the name and version information and is only present when source code is available.
Status of KAS App	The state of the application, <i>Started</i> or <i>Stopped</i> .
Start	Default mode (warm start) where the Retain Variables are loaded at the application startup. They are Not re-initialized; whereas other variables are started with their initial values.
Cold Start	Use retain variables with their default values. Such starts occurs from time to time but are few.
Stop	Stop the application
Auto-start	Select this option to automatically start the KAS application when the controller is powered up. The application will start using retained variables (a "warm start") after the controller has booted up. To change this setting, click the Auto-start checkbox to either activate or deactivate this option and click the Apply button. The control will use the new setting at the next power-up. This option is recommended when the system is in production.
Clear all errors	Clicking this button will clear the error log for all axes.

NOTE

2.2.1 Axis

You can view a visual representation of the motors from the Axis tab. The axis wheels are visible after your application is started. The following can be monitored from the display:

- Real and Simulated axes
- Actual position with solid line and actual position value
- Command position with the dotted line and (command position value) in parentheses
- Axis State: Powered-off , Powered-On, or Error as well as Simulated Powered Off and ON
- Identify the axes from the label, as defined by the axis name in your application
- Axis status or positions snapshot

The top screenshot shows the 'Spinning wheel' interface with three axes: AXIS1 (grey), AXIS2 (light blue, simulate error), and AXIS3 (light blue, simulate error). A legend indicates 'Powered Off' status. The bottom screenshot shows the same interface with AXIS1 (green, 8.70(1.47)), AXIS2 (red, 0.00(180.00), clear error), and AXIS3 (light green, 180.00(180.00), simulate error). A legend includes 'Powered On', 'Simulated Powered Off', 'Simulated Powered On', and 'In error'. A table titled 'AXIS2 Axis positions snapshot' is visible:

AXIS2	
Axis positions snapshot	
Actual	180.000000
Current	-524288.000000
Feedback	180.000000
Generator	0.000000
Pipe offset	0.000000
Pipe	180.000000
Power ON	0.000000
Delta Offset	0.000000
Reference	180.000000
Zero offset	0.000000

Information that is available by clicking on the axis

Title	Image (PN axis)	Image (PLCopen axis)	Image (digitizing axis)																																																								
<p>AXIS1</p> <p>Axis status snapshot</p> <table border="1"> <tr><td>Initialised</td><td>true</td></tr> <tr><td>Power ON</td><td>false</td></tr> <tr><td>Enable</td><td>true</td></tr> <tr><td>Found</td><td>true</td></tr> <tr><td>Configured</td><td>true</td></tr> <tr><td>Running</td><td>false</td></tr> <tr><td>Error</td><td>false</td></tr> <tr><td>Simulated</td><td>false</td></tr> <tr><td>Connected</td><td>false</td></tr> <tr><td>Warning</td><td>false</td></tr> <tr><td>Stopping</td><td>false</td></tr> <tr><td>Stopped</td><td>false</td></tr> </table>	Initialised	true	Power ON	false	Enable	true	Found	true	Configured	true	Running	false	Error	false	Simulated	false	Connected	false	Warning	false	Stopping	false	Stopped	false	<p>AXIS1</p> <p>Axis positions snapshot</p> <table border="1"> <tr><td>Actual</td><td>174.220505</td></tr> <tr><td>Current</td><td>0.000000</td></tr> <tr><td>Feedback</td><td>174.220505</td></tr> <tr><td>Generator</td><td>0.000000</td></tr> <tr><td>Pipe offset</td><td>0.000000</td></tr> <tr><td>Pipe</td><td>0.000000</td></tr> <tr><td>Power ON Delta</td><td>0.000000</td></tr> <tr><td>Offset</td><td>0.000000</td></tr> <tr><td>Reference</td><td>0.000000</td></tr> <tr><td>Zero offset</td><td>0.000000</td></tr> </table> <p>See the Axis Pipe Block section of the KAS IDE documentation for information about the axis parameters.</p>	Actual	174.220505	Current	0.000000	Feedback	174.220505	Generator	0.000000	Pipe offset	0.000000	Pipe	0.000000	Power ON Delta	0.000000	Offset	0.000000	Reference	0.000000	Zero offset	0.000000	<p>PLCOpenAxis2</p> <p>Axis positions snapshot</p> <table border="1"> <tr><td>Actual</td><td>3141.856728</td></tr> <tr><td>Command</td><td>3141.856728</td></tr> <tr><td>Normal</td><td>3141.856728</td></tr> <tr><td>Phase</td><td>0.000000</td></tr> <tr><td>Super imposed</td><td>0.000000</td></tr> </table> <p>See Axis Parameters in the PLCopen Function Blocks - Overview section of the KAS IDE documentation for information about the axis parameters.</p>	Actual	3141.856728	Command	3141.856728	Normal	3141.856728	Phase	0.000000	Super imposed	0.000000	<p>Axis3</p> <p>Axis positions snapshot</p> <table border="1"> <tr><td>Actual</td><td>0.000000</td></tr> </table>	Actual	0.000000
Initialised	true																																																										
Power ON	false																																																										
Enable	true																																																										
Found	true																																																										
Configured	true																																																										
Running	false																																																										
Error	false																																																										
Simulated	false																																																										
Connected	false																																																										
Warning	false																																																										
Stopping	false																																																										
Stopped	false																																																										
Actual	174.220505																																																										
Current	0.000000																																																										
Feedback	174.220505																																																										
Generator	0.000000																																																										
Pipe offset	0.000000																																																										
Pipe	0.000000																																																										
Power ON Delta	0.000000																																																										
Offset	0.000000																																																										
Reference	0.000000																																																										
Zero offset	0.000000																																																										
Actual	3141.856728																																																										
Command	3141.856728																																																										
Normal	3141.856728																																																										
Phase	0.000000																																																										
Super imposed	0.000000																																																										
Actual	0.000000																																																										

Additionally, if an axis is in error, the error can be cleared by clicking the text below the axis title.

2.2.2 Log Configuration

You can configure the log to filter the messages that are displayed. Each [source](#) can be set with its own [level](#).

The screenshot shows the 'Log Configuration' tab with a table for selecting log levels for various sources:

	IDE	Controller	EtherCAT	Drive	PLC	Motion	System	All
Error	<input type="radio"/>	<input type="radio"/>	<input type="radio"/>	<input type="radio"/>	<input type="radio"/>	<input type="radio"/>	<input type="radio"/>	<input type="radio"/>
Warning	<input checked="" type="radio"/>	<input checked="" type="radio"/>	<input checked="" type="radio"/>	<input checked="" type="radio"/>	<input checked="" type="radio"/>	<input checked="" type="radio"/>	<input checked="" type="radio"/>	<input type="radio"/>
Info	<input type="radio"/>	<input type="radio"/>	<input type="radio"/>	<input type="radio"/>	<input type="radio"/>	<input type="radio"/>	<input type="radio"/>	<input type="radio"/>
Debug	<input type="radio"/>	<input type="radio"/>	<input type="radio"/>	<input type="radio"/>	<input type="radio"/>	<input type="radio"/>	<input type="radio"/>	<input type="radio"/>

Buttons: **Apply** **Refresh**

Each message has one of the following levels, with importance in descending order:
 Error > Warning > Info > Debug

TIP

How to Choose the Appropriate Level?

When a level is set for a source, only messages with the same or higher importance are recorded. For example, if a source is set to WARNING, then all messages with levels WARNING, ERROR and CRITICAL are recorded (DEBUG and INFO messages are discarded).

Therefore, DEBUG is the most verbose and ERROR is the least verbose level. Filtering is quicker with less verbose levels, due to the number of messages.






NOTE

Critical messages are always recorded. Therefore, the Critical level is not visible.

Source

Source	Apply to...
IDE	Win32 applications: the KAS IDE and the KAS Runtime Server (also called the KAS Runtime Front-end)
Controller	For the KAS Runtime items: Drivers, IOEngine, SinopEngine...
EtherCAT	For all kinds of EtherCAT items: Motion bus, I/Os
Drive	Messages from Kollmorgen drives
PLC	For application engineers to create custom log within the PLC programs (similar to printf)
Motion	Messages coming from the Motion engines: PLCopen, Pipe network or VM
System	For common API and libraries. Also includes messages issued from the operating system.

Level

Level	Icon	Description
DEBUG		Any information logged for development purpose. You may safely ignore this log.
INFO		Information status of the current process. You may safely ignore this log.
WARNING		System is stable but the KAS IDE warns that an unexpected event can occur. You can ignore this log.
ERROR		The application does not behave as expected but the processes remain stable.
CRITICAL		Application crashes or becomes unstable. Data is corrupted. At this point the application behavior can be unpredictable.

2.2.3 Log Data

KAS log files may be viewed from the Log Data tab. These messages can help describe the current state of the system and to help identify any operation errors encountered when developing your system. A PAC will display as many as 20 files. A PDMM or PCMM will display as many as 10 files.

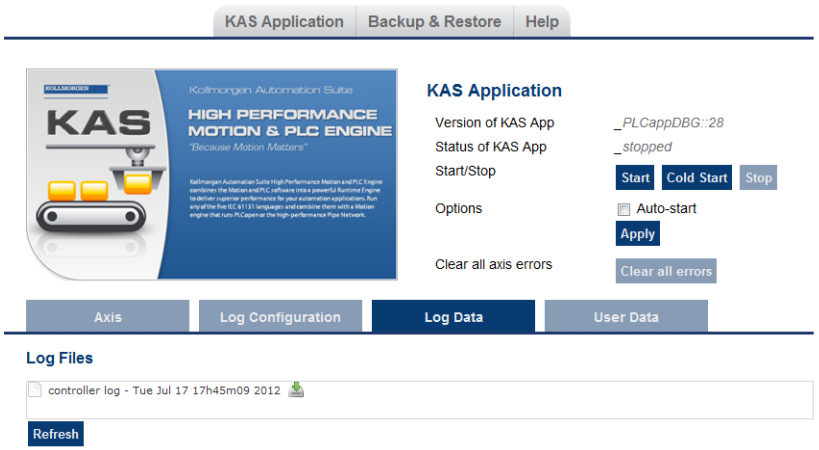


Figure 3-2: Example of log files displayed from a PAC webserver.

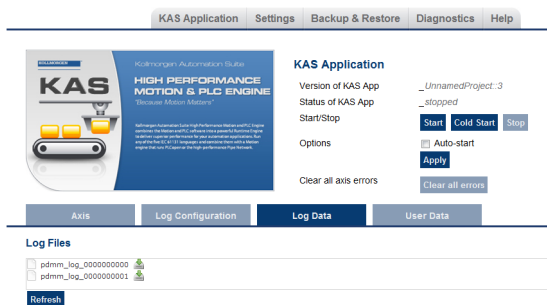


Figure 3-3: Example of log files displayed from a PDMM or PCMM webserver.

Clicking on a listed log file will open it in your web browser. The log file may be downloaded by clicking on the green download icon next to the log entry. The default name is the same as the file's name. If you try to open a file that no longer exists, the message `"/logfiles/<selected file name> not found."` Refresh your browser window and try again.

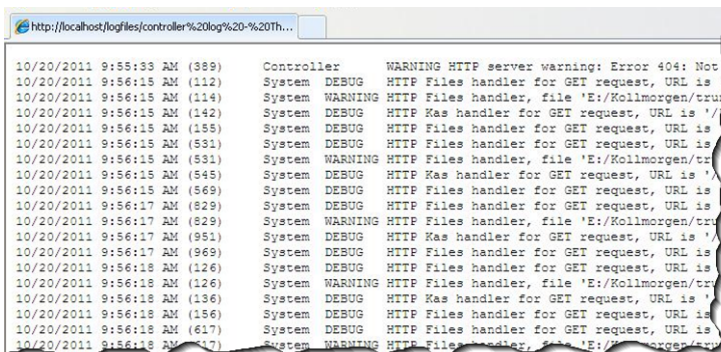


Figure 3-4: Example of a log file's content, displayed in a browser.

NOTE

Log data is collected and updated every 15 seconds on a PDMM or PCMM. A new log file will be created when the current file is full. You may need to wait for up to 15 seconds for a log to show up in the list. The PDMM and PCMM log files both have the same file naming scheme (pdmm_log_XXXXXXXXXX).

2.2.3.1 Log Message Content

Every log message in the table has the following information:

Field	Description
Time	Time when the log was recorded with the format: DD-MMMM-YY hh:mm:ss (millisecond)
Source	Identifies a software or hardware component issuing the messages. Each source is configured with a specific Level.
Level	Each message has one of the following levels with importance in ascending order: DEBUG > INFO > WARNING > ERROR > CRITICAL
Message	Text of the message issued from the source

Table 3-1: Log Messages - List of Field

TIP

Log messages is an important source of information when you are troubleshooting your project. When reporting an issue to [Support](#), copy/paste the logs in your report.

2.2.3.2 PDMM and PCMM Log Files

Logs generated on a PDMM or PCMM are stored in flash memory at `/mount/flash/log`. The files are stored in a rotating pool consisting of a maximum of 10 files. The files have a maximum size of 200 kilobytes each; the most amount of space the log files will consume is 2 MB. Once an "eleventh" file is created the earliest file is flushed to make room for the new file.

The PDMM and PCMM generated log levels can be controlled from the KAS IDE and Web Server. From the IDE, the log levels can be filtered in the configuration window in the *Logs and Information* tab.

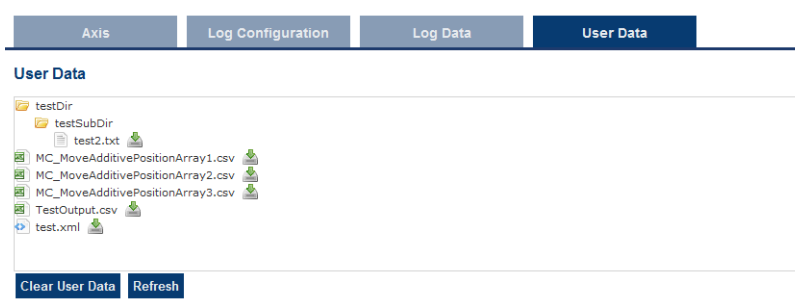
2.2.3.3.1 Log File Naming Convention

The logs have the naming format `pdmm_logs_n` where *n* is a value ranging from 0000000000 to 4294967295, which is the maximum value a 32-bit location can store.

As an example, when the files are first created they will be named `pdmm_logs_0000000000`, `pdmm_logs_0000000001`, `pdmm_logs_0000000002` and so on. The file that will be created after `pdmm_logs_4294967295` is `pdmm_logs_0000000000`. The naming gets reset and continues.

2.2.4 User Data

This tab lists any user-generated files or folders found in the PAC's compact flash drive, PDMM's, or PCMM's flash memory. Clicking a folder will display the folders contents. Clicking on the green download icon will immediately download the file.



The **Clear User Data** button will erase all of the files in the user data folder.

2.3 Web Server Settings

This section allows you to:

- Display and update the firmware for the KAS Runtime‡
- Display the network settings and modify the IP address ‡
- Reset the control to factory settings
- Access the [SD Card Actions ‡](#)
- Access the "User Account" (→ p. 19) to change the password.

‡ PDMM and PCMMOnly

2.3.1 Firmware Tab (PDMM and PCMM Only)

This tab displays the firmware version. Additionally, you may upgrade the firmware from this tab.

2.3.1.1 Upgrading the Firmware

This section describes how to upgrade the PDMM or PCMM's firmware using the web server. This operation downloads the KAS Runtime and its version number to the on-board flash memory in the controller.

The firmware files are IMG files with the following name format:

KAS-PCMM-M-*{model-code}*-*{software-revision}*.img
 KAS-PDMM-M-*{model-code}*-*{software-revision}*.img

The *model-code* reflects the CPU speed.

Model	CPU Speed
MCEC	800 MHz
M1EC	1.2 GHz

1. Download the latest drive firmware and/or runtime firmware from Kollmorgen.com.
2. Open the controller's web server in your web browser by entering its IP address.
3. Select the **Settings** tabbed-page.
4. In the **Firmware** pane, click the **Choose File** button to select the new firmware image file for the KAS Runtime.

The recommended file is displayed in the **Current Information** section, as seen below.

- Click **Upgrade** to start the update procedure.

TIP

If the Upgrade button is disabled, log into the webserver. Click on **Login** at the top of the web page and enter the password. See "User Authentication" (→ p. 9) for more information about logging in.

A message and a throbber are shown across the web page, indicating that maintenance is in progress. The device's 7-segment display will animate chasing lights.

Successful upgrade	<p>A message similar to the following is shown upon a successful firmware upgrade:</p> <p>Upload of firmware KAS-PDMM-M-MCEC-2.10.0.54368.img successful.</p> <p>Please reboot the unit in order to boot on the new firmware, and once reboot is performed, press CTRL+F5 in your web browser to force a page refresh.</p>
Incompatible firmware	<p>An error message similar to the following will be displayed if the wrong firmware file was downloaded:</p> <p>The file provided is not compatible with this device.</p> <p>The file name should be...</p> <p>"KAS-PDMM-M-MCEC-{version}.img"</p>

- After the download is complete, click **Reboot** (for more details on the boot sequence, refer to Booting the AKD PDMM).

A message and a throbber are shown over the web server while the reboot is in progress. The login session will no longer be valid when the reboot is complete. The web server will display a message to indicate the user has been logged out.

- Press **CTRL+F5** to force the web browser to refresh the page.

IMPORTANT

Do not try to refresh the web page until firmware upgrade is done.

2.3.1.2 Recovery Mode (PDMM or PCMM Only)

If the PDMM or PCMM detects a problem in the firmware, it displays an "r" on the 7-segment display and will automatically enter Recovery Mode. Recovery Mode provides the ability to select and upgrade a firmware image file containing the KAS Runtime image on the PDMM or PCMM. In the rare case when Recovery Mode cannot be automatically accessed, pressing and holding B2 at boot will force the PDMM or PCMM to boot into Recovery Mode.

IMPORTANT

Warning! The Recovery Mode allows any firmware image file to be loaded into the PDMM's or PCMM's flash memory. The Recovery Mode does NOT check the selected firmware file to verify it's compatibility with the hardware model. Check that the "Recommended File Name" matches the selected firmware file. If an incompatible firmware file is loaded into the PDMM's or PCMM's flash memory, the PDMM or PCMM will fail to boot into the Runtime image and will fail to automatically boot into Recovery Mode. To recover from this situation requires manually booting into Recovery Mode. For more details, see Booting from the Recovery Image.

2.3.2 Network Tab (PDMM or PCMM Only)

The contents of this tab display the current rotary switch position of the PDMM or PCMM and its MAC address. Additionally, you may manually change the AKD PDMM's or PCMM's IP address.

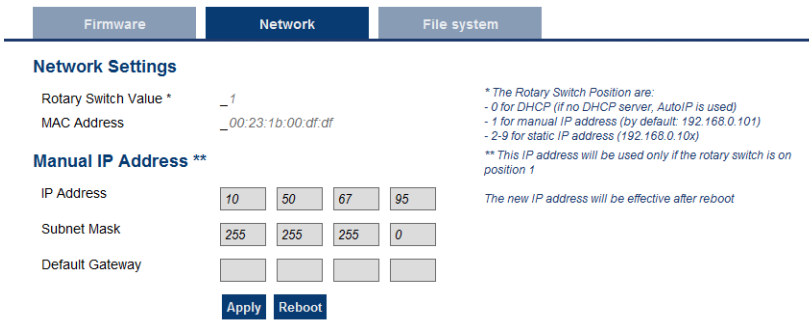


Figure 3-5: Example of a PDMM or PCMM with a manually defined IP address

2.3.2.1 About the Rotary Switch

The rotary switch on the PDMM or PCMM can be set on a position from 0 to 9.

Switch Position	Description
Position 0	The drive tries to get an IP address from a DHCP server. If the DHCP fails, then the PDMM or PCMM uses AutoIP to get a usable IP address.
Position 1	The default custom static IP address, 192.168.0.101 or a custom IP address.
Position 2-9	The PDMM or PCMM is pre-configured with static IP addresses ranging from 192.168.0.102 (Position 2) to 192.168.0.109 (Position 9).

TIP

If a DHCP server is not present, the drive will assume an Automatic Private IP Address of the form 169.254.x.x

2.3.2.2 Change the IP Address

To connect and use your PDMM or PCMM within your computer network, you may configure its IP address by using the web server as follows:

1. Open the controller's web server in your internet browser
2. Select the **Settings** tabbed-page
3. In the **Network** pane, set static IP address according to the position defined via the rotary switch
 - If the rotary switch is set to Position 1 you may use the default custom address or set a value in the Manual IP Address fields.
4. Configure the Manual IP Address
5. Configure the subnet mask (default is 255.255.255.0)
6. (Optional) Configure the gateway address if the PDMM or PCMM is outside your local network
7. Click **Apply**
8. Click **Reboot**

2.3.3 File System Tab

This section contains a button which allows you to reset the control to the factory settings. The steps to reset the controller vary slightly based on the platform.

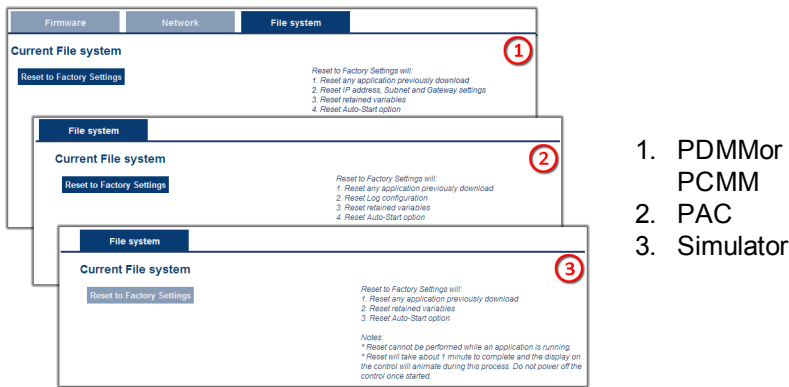


Figure 3-6: File System tab on an PDMM or PCMM web server, PAC web server, and when using Simulator.

2.3.3.1 Reset to Factory Settings

When this button is pressed, the control will be reset to factory default settings. The user is prompted to confirm this action before the function is performed.

The following changes occur during factory reset:

- Reset any application previously downloaded
- All log files and user data files are erased
- Reset the IP address, Subnet, and Gateway settings ‡
- Reset any retained variables
- Reset the Auto-Start option
- Reset the password to default

‡ PDMM and PCMM only

Notes about the reset:

- The factory reset cannot be performed while an application is running. The "Reset to Factory Settings" button is disabled while an application is running.
- The factory reset will take 4-5 minutes to complete and the 7-segment display on the control will animate during this process. The control should not be turned off during this procedure.
- After the factory reset is complete, the controller will be powered down and restarted automatically.
- This webpage will not update during the reset procedure and can be closed.
- PDMM or PCMM Only: After the controller is restarted, the IP address of the control may change based on the controls rotary switch. If the rotary switch is at position 0, the same IP address as before should be assigned to the control. If the rotary switch is set to 1-9, a pre-configured IP address will be defined and must be taken into account when trying to reconnect to the webpage using a web browser.

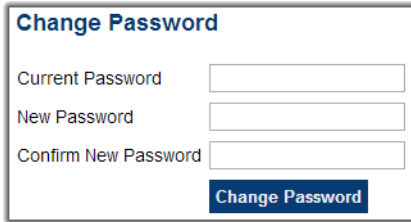
2.3.4 SD Card Tab (PDMM or PCMM Only)

2.3.4.1 SD Card Actions

The *Format* function formats the SD card as FAT32, erasing all data from the card. This function cannot be performed while an application is running.

2.3.5 User Account

To change the password you must enter the current password and the new password twice.



The screenshot shows a web form titled "Change Password". It contains three input fields: "Current Password", "New Password", and "Confirm New Password". Below the input fields is a blue button labeled "Change Password".

The new password must meet the following conditions:

- It must be 6-20 characters long
- It may not contain semicolons (;), ampersands (&), spaces, quotes (' and "), slashes (/ and \), or the number sign(#).

2.3.5.1 I forgot my password

Should this happen, you can set a new password from the IDE.

1. Open the webserver from the IDE.
2. Click on the Settings tab.
3. Click on the User Account tab.
4. Enter and confirm the new password.

This allows you to create a new password without entering the current one.

2.4 Backup & Restore from the Web Server

These functions are used to replicate a PDMM or PCMM (*Backup* and then *Restore*) to or from the SD card. The elements that are backed up or restored are the firmware, the network configuration, the Retain Variables, and the PLC application.

- These functions cannot be performed while an application is running.
- *Restore* and *Backup* take several minutes to complete. Do not power off the control once started.
- The Controller is rebooted after a *Restore*.

The PDMM and PCMM are available with different CPU speed variants (800 MHz and 1.2 GHz). The PDMM and PCMM models have the same functionality, but due to the CPU speed differences an application designed for the 1.2 GHz model may not execute as expected on the 800 MHz model. The Restore will not allow a higher speed model to be replaced with a lower speed model. The Restore will allow a lower speed model to be replaced with a higher speed model, if the Backup contains the model specific Runtime firmware file.

	800 MHz Restore	1.2 GHz Restore
800 MHz Backup	Yes	Yes - If 1.2 GHz Runtime file is included in the Backup
1.2 GHz Backup	No	Yes

TIP

This section provides an overview of the backup and restore processes. For a deeper discussion, see "EtherCAT Devices Backup and Restore" (→ p. 25).

2.4.1 Backup Tab

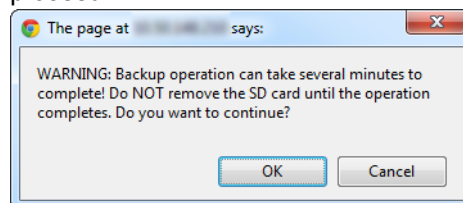
Backup Controller

This function is used to replicate a PCMM or the controller portion of the PDMM. Clicking the button will save the data to the SD card.

The 1.2 GHz Runtime firmware file is optional. If provided, an 800 MHz model can be replaced with a 1.2 GHz model. If the 1.2 GHz Runtime firmware file is not included, then an 800 MHz model can only be replaced with another 800 MHz model.



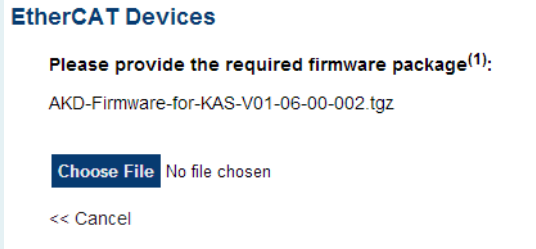
After starting the Backup, an alert will be presented to confirm the backup should proceed.



Backup EtherCAT Devices

This function replicates the network topology as well as the AKD, PDMM, AKD-C, and AKD-N drives' unique ID, firmware and data. To accomplish the backup, a copy of the firmware package is required. There are several possible scenarios upon clicking this button.

- If an archived copy of the same firmware package is on the controller as is used on the drives then clicking the button will start the backup.
- If a copy of the firmware package cannot be found, you will be prompted to browse for one. A link to the Kollmorgen website is provided; all firmware packages can be found on the site.



- If an archive is found on the controller but it does not match the network configuration then you will be prompted to browse for one or download one from the website.

For all other EtherCAT devices, such as couplers, IOs, ServoStar drives, and third-party devices, only the unique ID is backed up.

TIP

Files on the website are saved in ZIP format. You must unzip the download to access the TGZ file.

2.4.2 Restore Tab

Restore Controller

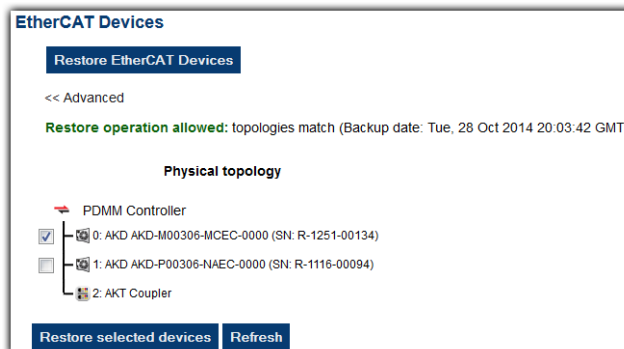
This function restores a PDMM or PCMM's firmware, network configuration, retained variables and PLC application from the SD card.

Restore EtherCAT Devices

This function automatically restores the data and firmware of any replaced AKD drives, and the station alias of other EtherCAT devices.

Advanced

Clicking this button creates a map of the network and it's components. If a valid firmware file is found and the current topology matches the backup file you may select the device(s) that need to be restored. Clicking *Restore selected devices* will restore the drive's firmware.



2.4.3 Import/Export

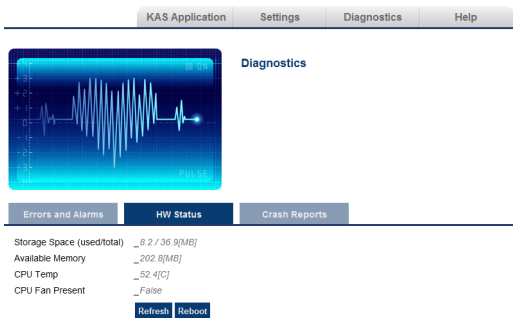
These functions allow you to save a copy of the EtherCAT configurations backup file to a computer and Import the backup file so it may be used for restore functions.



Export Backup	This button allows you to save a backup of the EtherCAT configuration to a computer.
Choose File	This button allows you to select a previously exported backup file to be imported.
Replace Backup	This button imports the selected backup file, replacing any existing backup.

2.5 Diagnostic (PDMM and PCMM Only)

This page displays information about the hardware status (storage space, memory and CPU temperature) and errors and alarms.



2.5.1 Errors and Alarms

Any controller errors or alarms generated by the system will be shown here and on the 7-segment display. A common error or alarm is due to the flash memory being full. This is often caused by heavy use of the PLC Advanced File function blocks.

The **Refresh** button updates the list. The **Clear** button will remove the contents of this tab. Please note that some errors or alarms are only cleared by powering off and restarting the AKD PDMM or PCMM.

CODE	DESCRIPTION	REMEDY
E12	Not enough flash memory available.	Clean-up the flash memory by removing log files, application programs, recipes, or other data files.
A12	Flash memory is low on free space.	Clean-up the flash memory by removing log files, application programs, recipes, or other data files. Reset to factory defaults.

Refresh **Clear**

TIP

Axis errors can be seen in the KAS Application Axis tab.

2.5.2 Hardware Status

Storage Space	The diagnostic displays both the used and total available amount of storage space in megabytes (MB). Used is the amount of file space currently being used by all files in flash memory. Total is the total amount of file space available for files in flash memory.
Available Memory	This field displays the amount of RAM memory available on the Controller.
CPU usage	This field displays the current load on the CPU. If the load goes over 90%, the field turns red.

CPU Temp	This field displays the temperature of the CPU in Celsius. If the CPU temperature is greater than the CPU warning limit, the temperature background color will be changed to yellow. If the CPU temperature is greater than the CPU critical temperature, the temperature background color will be changed to red. The normal operating range is 0-125°C.
CPU Fan Present	This field is either True or False , depending upon if there is a CPU fan present in the controller.
Refresh	Clicking this button will refresh the Hardware Status information.
Reboot	Clicking this button will reboot the web server.

⚠ IMPORTANT

Do not try to refresh the web page until the server has rebooted.

2.5.3 Crash Reports

The files shown on this tab are reports of the process that failed if there is a crash. These files (GZ archives) may be sent to Kollmorgen for analysis.

HW Status
Errors and Alarms
Crash Reports

Crashdump Files

[http_50000_50000_50000_50000_1.core.gz](#)
[http_50000_50000_50000_50000_2.core.gz](#)
[http_50000_50000_50000_50000_3.core.gz](#)
[http_50000_50000_50000_50000_4.core.gz](#)

[Clear Crashdump](#)

3 EtherCAT Devices Backup & Restore - In Depth

3.1 EtherCAT Devices Backup and Restore

The PAC and PDMM or PCMM can backup/restore EtherCAT devices (at present, only AKD drives) on an EtherCAT network. This feature is useful as a maintenance operation to replace any AKD drives in an operational machine. This feature reduces the manual steps for saving/loading each AKD drive's firmware and parameters into a few simple automated steps. The Backup/Restore functionality is located in the controller's web server and is accessible from a web browser. For details about the web server see "Using the KAS Web Server" (→ p. 7).

Backup & Restore

Note that most of the following features are not available when PLC application is running or online config mode is active

EtherCAT devices backup: Mon, 06 Jul 2015 21:22:42 GMT

Controller

Backup Controller

Backup Controller is used to replicate a PCMM or the controller portion of a PDMM. The elements that are backed up are the firmware, network configuration, retained variables, and PLC application.

Notes:

- * This function cannot be performed while an application is running.
- * Backup Controller takes several minutes to complete. Do not power off the controller once started.

EtherCAT Devices

Backup EtherCAT Devices

Backup EtherCAT Devices will save the network topology, the AKD drives firmware and the AKD drives parameters. For EtherCAT devices backup operation, a matching AKD firmware package is required.

- * If the matching firmware package already exists on the controller, it will be used for future Backups.
- * If the firmware package does not exist on the controller, you will be asked to provide it.

(1)All firmware packages are available at Kollmorgen.com

See also Backup and Restore a PDMM or PCMM.

3.1.1 EtherCAT Devices Backup

The Backup operation discovers all the devices on the EtherCAT network and stores the topology information, AKD firmware files, and AKD parameters to the controller's local storage.

Controller	Local Storage
PAC	Compact Flash Card
PDMM or PCMM	SD Memory Card (see SD Card Support for more information)

Before starting a backup of the EtherCAT Devices, you will need:

- The AKD firmware files package, AKD-Firmware-for-KAS-Vxx-xx-xx-xxx.tgz. This package is included in the KAS software installation directory (\Program Files (x86)\Kollmorgen\Kollmorgen Automation Suite\Astrolabe\DrivesFW) or is available for download from the Kollmorgen [website](http://www.kollmorgen.com/en-us/website-resources/other/akd-software/) (www.kollmorgen.com/en-us/website-resources/other/akd-software/).
- An SD memory card must be in the SD slot if you are using a PDMM or PCMM. PACs have a built-in Compact Flash card.
- All the EtherCAT network devices must be connected to the PAC or PDMM or PCMM, and configured as necessary for machine operation.

TIP

Make sure the devices are in the order as expected. The topology information is stored in the backup and is used to check for identical topology during a restore function.

- A PLC application downloaded to the PAC or PDMM / PCMM, containing the EtherCAT device map.

NOTE

The PLC application cannot be running and the IDE must not be in Online Configuration Mode. Please stop your PLC application or disable Online Configuration Mode before a Backup or Restore.

3.1.1.1 Backup Steps

1. From the web server home page, click on the Backup & Restore tab:
2. Under the Backup tab, press the Backup EtherCAT Devices button.

The web server will ask you to choose a firmware package file and suggest the filename that matches the firmware version on your drives. Selecting the firmware package file is a one-time event. The controller will remember your selection and will not ask you again for future backups.

Backup Controller

EtherCAT Devices

Please provide the required firmware package⁽¹⁾:

AKD-Firmware-for-KAS-V01-12-00-003.tgz

No file selected.

(1)All firmware packages are available at Kollmorgen.com

Backup Controller is used to replicate a PCMM or the controller portion of a PDMM. The elements that are backed up are the firmware, network configuration, retained variables, and PLC application.

Notes:

- * This function cannot be performed while an application is running.
- * Backup Controller takes several minutes to complete. Do not power off the controller once started.

Backup EtherCAT Devices will save the network topology, the AKD drives firmware and the AKD drives parameters. For EtherCAT devices backup operation, a matching AKD firmware package is required.

- * If the matching firmware package already exists on the controller, it will be used for future backups.
- * If the firmware package does not exist on the controller, you will be asked to provide it.

3. Press the Continue Backup EtherCAT Devices button. It will take a couple of minutes or longer, depending on the number of AKDs in the system.

Backup Controller

EtherCAT Devices

(1)All firmware packages are available at Kollmorgen.com

Backup Controller is used to replicate a PCMM or the controller portion of a PDMM. The elements that are backed up are the firmware, network configuration, retained variables, and PLC application.

Notes:

- * This function cannot be performed while an application is running.
- * Backup Controller takes several minutes to complete. Do not power off the controller once started.

Backup EtherCAT Devices will save the network topology, the AKD drives firmware and the AKD drives parameters. For EtherCAT devices backup operation, a matching AKD firmware package is required.

- * If the matching firmware package already exists on the controller, it will be used for future backups.
- * If the firmware package does not exist on the controller, you will be asked to provide it.

When the backup is complete, the web server will indicate whether the backup was successful.

TIP

After the backup is complete, it is a good idea to export the backup to an off-site location for safe keeping. See "Export/Import EtherCAT Devices Backup" (→ p. 29).

3.1.2 EtherCAT Devices Restore

The Restore operation discovers the devices on the EtherCAT network and compares the physical topology information to the topology information stored in the backup. A Restore will detect the replaced AKD devices and restore them. Advanced users can manually select the specific AKD devices and restore them. The

backup files containing the topology information, AKD firmware file, and AKD parameters are retrieved from the controller's local storage.

Controller	Local Storage
PAC	Compact Flash Card
PDMM or PCMM	SD Memory Card (see SD Card Support for more information)

3.1.2.1 Steps

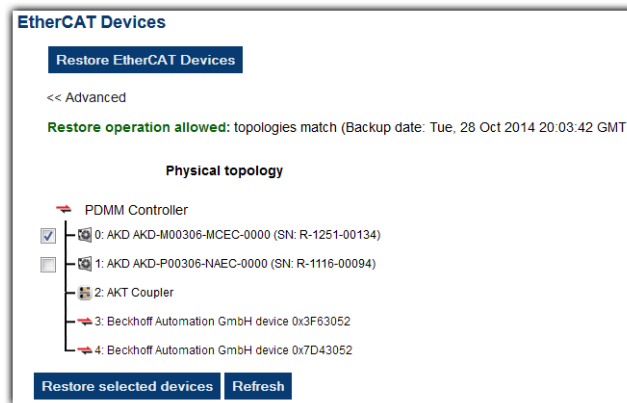
⚠ IMPORTANT

The application will start immediately after the Restore operation is complete if the Autostart option is enabled on the controller. Be sure to Restore all of the replaced devices and the EtherCAT device order is correct. *Disable the Autostart option before commanding the Restore operation if you want to check the devices before starting the application.*

NOTE

The EtherCAT Devices Backup and Restore feature may be used in EtherCAT networks which have third party devices, but only the Kollmorgen AKDs can be backup and restored. Specific configurations applied to third party devices with non-Kollmorgen tools have to be reapplied when the third party device is replaced.

1. From the web server home page, click on the *Backup & Restore* tab:
2. Under the *Restore* tab, you can choose to restore the replaced EtherCAT AKD devices or manually select the AKD devices with the Advanced view.
 - To restore the replaced AKD devices, press the *Restore EtherCAT Devices* button. When the restore is complete, the web server will indicate whether it was successful.
 - To select the AKD devices and manually restore:
 1. Press the *Advanced* link.
 2. Select the AKD devices you want to restore. The controller will identify the replaced AKDs and pre-select them for you.
 3. Press *Restore selected devices*.



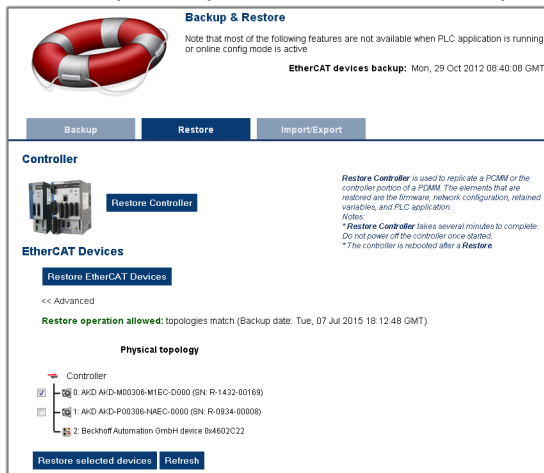
When the restore is complete, the web server will indicate whether it was successful.

3.1.3 AKD Backup/Restore Compatibility

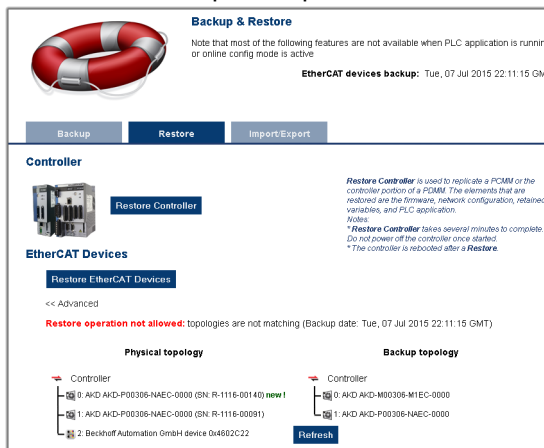
The replacement AKD must have the same model number as the AKD that was originally stored in the backup. The *Restore* operation compares the model numbers between the backup and the replacement AKD. The restore will not be allowed if they are not compatible.

- To check the model number on your AKD, see the sticker on the side of the drive.
- To check compatibility between your replacement drive and the backup, replace the AKD on the EtherCAT network, and press the Scan network button.

- The web server displays the physical topology and allows you to restore the selected drives if the backup and replacement drives are compatible.



- The web server displays the backup and physical topology and indicates the non-compatible drives if the backup and replacement drive are not compatible, .

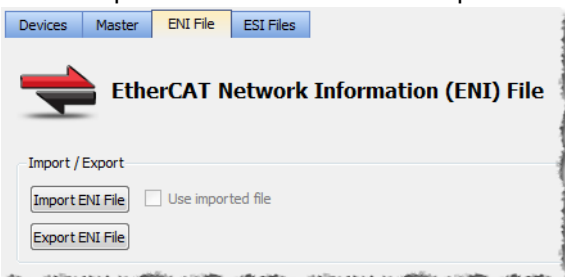


TIP

The serial number (SN) is displayed in the Physical topology web server view and on the sticker affixed to the AKD. You can use the serial number to match the actual hardware with its representation on the web server.

3.1.4 Autostart with Replacement drives and the unique ID

The EtherCAT unique ID option will write a unique identifier into each EtherCAT device. It can be enabled or disabled in the IDE, from the Project View -> EtherCAT -> XML Configuration File tab. If the unique ID option is enabled, the unique ID will be stored in the AKD backup. Later, when the drive is replaced and restored, the same unique ID will be restored to the replacement drive.



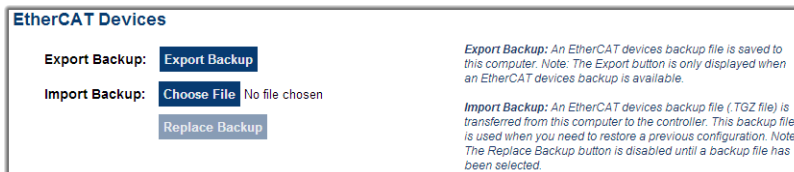
When the unique ID option is enabled, a replacement drive must be restored before the PLC program can be started. If the option is disabled, then the PLC program can be started without checking that the replaced drive has been restored.

TIP

If you enable the Autostart option in the controller and you plan to use the AKD Backup and Restore functions, it is strongly recommended that you enable the unique ID option. This will prevent the controller from automatically starting a PLC application with a replacement AKD, that has *not* been restored.

3.1.5 Export/Import EtherCAT Devices Backup

A network backup may be exported and imported. The export procedure saves a backup file to the computer running the web browser. The import procedure allows you to transfer a backup file onto the controller to be used later for restoring a previous configuration.



3.1.5.1 Export Procedure

NOTE

The Export button is only displayed if an AKD backup is available.

1. Click on the "Export Backup" button. The browser starts transferring a backup file. Depending upon the browser being used, this may involve a prompt confirming that you wish to receive the file.
2. You may move the file to a different directory once the file is saved. The file may be renamed to help identify the backup file with the machine.

3.1.5.2 Import Procedure

1. Specify a backup file to import by clicking on the "Browse" button. This backup file will be used to replace the current backup on the controller.
2. After a backup file is specified, click on the "Replace Backup" button. This creates a backup on the controller with the data stored in the specified backup file. Any previously existing backup will be replaced. If the import fails, the previous backup will not be replaced.

NOTE

- The Replace Backup button is disabled until a backup file has been selected.
- On some browsers, the "Browse" button may be labeled "Choose File".

3.1.6 EtherCAT Devices Backup/Restore Limitations

- The "EtherCAT Devices Backup" (→ p. 25) and "EtherCAT Devices Restore" (→ p. 26) functions are not permitted while a PLC application is running or when the IDE is in Online Configuration Mode. Please stop your PLC application or disable Online Configuration Mode before a Backup or Restore.
- Only a single backup is supported in the controller at one time.

NOTE

If you want to keep multiple backup configurations, you can perform the backup and then export it to a local PC or USB flash memory stick. Later, when you are ready to restore, you can import the specific backup file to the controller, and then perform the restore.

TIP

Beware that an import will overwrite any backup existing in the controller or PDMM SD card. If you are using an PDMM, the alternative method is to use a separate SD card for each backup/restore configuration.

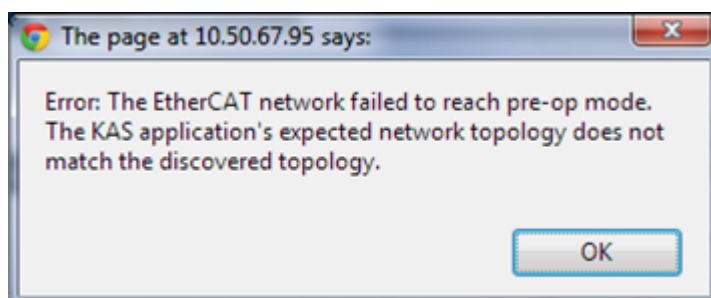
- All AKD drives on the EtherCAT network must have the same AKD firmware version.
- The AKD firmware version must be 01-06-00-003 or higher.
- AKD firmware packages are available for all production releases.
- Only AKD drives are supported for backup/restore. Kollmorgen S300/S700 drives are not supported by backup/restore.
- PDMM or PCMM system backup or restore is a two-step process:
 1. Backup or Restore the PDMM or PCMM controller
 2. Backup or Restore the AKDs (including the AKD drive inside the PDMM).

3.1.7 Troubleshooting EtherCAT Devices Backup/Restore

The web server displays an error message if an EtherCAT Device backup or restore fails. The message describes the cause of the failure and a possible remedy. Please be sure to note any error message(s), as they will be helpful with remedying the problem.

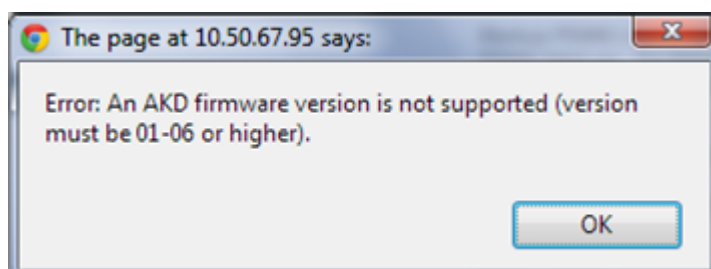
Described below are some common error messages and remedies. The message box format may appear differently depending on the web browser, but the message content is the same.

During AKD backup, EtherCAT fails to reach pre-op mode:



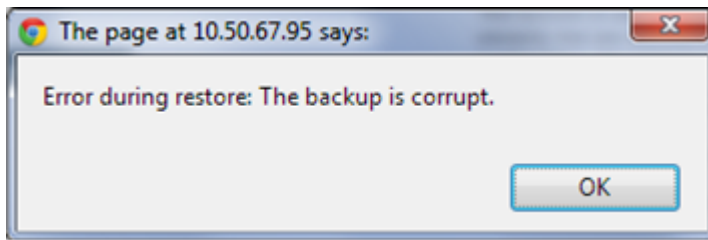
1. Using the IDE, open the EtherCAT view and scan the network.
2. Compare the nodes, their order, and types to the topology in your application.
3. After you identify the differences do one of the following:
 - Modify the application's devices to match the physical network.
 - Correct the physical network by adding/moving/removing nodes.

During AKD backup, at least one AKD has an unsupported firmware error for backup:



1. Using the IDE, open the EtherCAT view.
2. Upgrade all of the AKDs drive firmware to at least version 01-06.

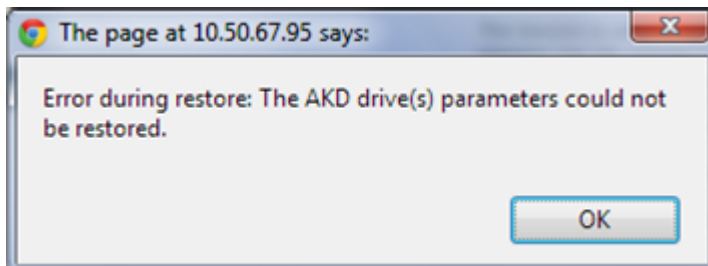
During AKD restore, the backup file is corrupt:



Before restoring AKD(s), the backup file must be valid. To correct a bad backup file on a controller, import a known good backup file from another source (local hard drive, network drive, USB flash stick, etc.). If you do not have a valid backup file, then you will need to manually configure the replacement AKDs by downloading firmware and modifying the drive's parameters using the AKD views in the IDE.

Not able to restore AKDs successfully.

The error message will describe at which step the restore failed. For example, failing to restore parameters:



1. If an AKD restore fails and you have already verified the controller has a valid backup and the network topology is correct, then retry the Restore.
2. If you still cannot restore successfully after two or three attempts, check your network cables and try a different replacement AKD drive(s). This test will isolate the problem to the specific drive(s) or the controller problem.
3. If you still cannot restore a replacement AKD, then you will need to manually configure the replacement AKDs by downloading firmware and modifying the drive's parameters using the AKD views in the IDE.

About KOLLMORGEN

Kollmorgen is a leading provider of motion systems and components for machine builders. Through world-class knowledge in motion, industry-leading quality and deep expertise in linking and integrating standard and custom products, Kollmorgen delivers breakthrough solutions that are unmatched in performance, reliability and ease-of-use, giving machine builders an irrefutable marketplace advantage.



Join the [Kollmorgen Developer Network](#) for product support. Ask the community questions, search the knowledge base for answers, get downloads, and suggest improvements.

North America KOLLMORGEN

203A West Rock Road
Radford, VA 24141
USA

Web: www.kollmorgen.com

Mail: support@kollmorgen.com

Tel.: +1 - 540 - 633 - 3545

Fax: +1 - 540 - 639 - 4162

Europe KOLLMORGEN Europe GmbH

Pempelfurtstraße 1
40880 Ratingen
Germany

Web: www.kollmorgen.com

Mail: technik@kollmorgen.com

Tel.: +49 - 2102 - 9394 - 0

Fax: +49 - 2102 - 9394 - 3155

China and SEA KOLLMORGEN

Room 202, Building 3, Lane 168,
Lin Hong Road, Changning District
Shanghai

Web: www.kollmorgen.cn

Mail: sales.china@kollmorgen.com

Tel.: +86 - 400 661 2802

Fax: +86 - 21 6128 9877