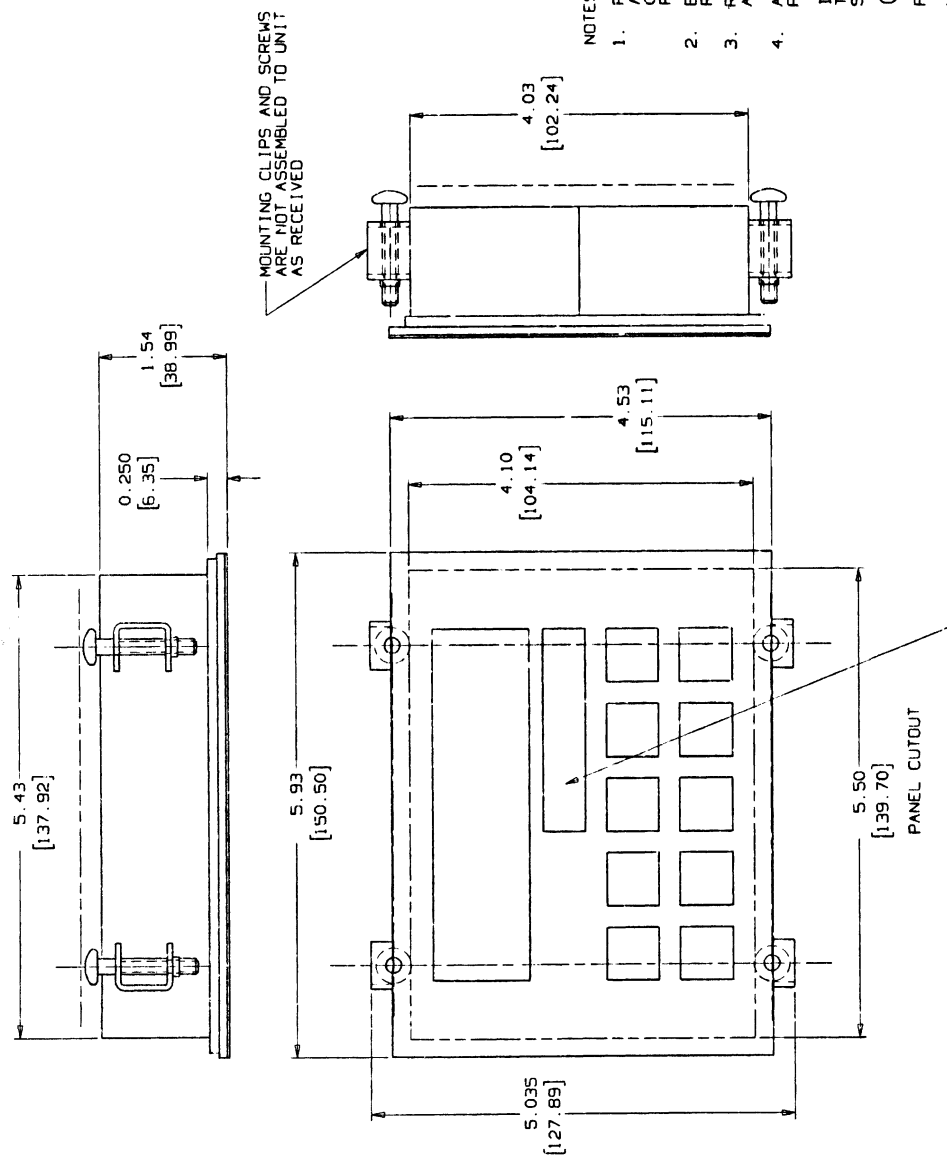


## **This is a Discontinued Product**

---

Contact Kollmorgen Customer Support at  
1-540-633-3545 or email us at [support.kollmorgen.com](mailto:support.kollmorgen.com)  
if assistance is required.

CAD DRAWING... COMPUTER UPDATE ONLY			
LTR.	EC NUMBER	REVISION DESCRIPTION	DATE
A		ISSUE FOR RELEASE	4-23-94
B	82200	ADD NOTE 5	11-07-94 MAM
C	82889	ADDED MANUAL, NOTE 4	SA 02-17-97 [Signature]



- NOTES:
1. PURCHASE FROM NEMATRON CORPORATION ANN ARBOR, MICHIGAN. CONTROL PANEL PART NUMBER IWS-30
  2. BASIC FIRMWARE TO BE LOADED AS RECEIVED.
  3. REFERENCE TEST SPEC. 222680-001 AND PRODUCT SPEC. 222681-001.
  4. ADDITIONAL ITEMS AS FOLLOWS ARE PACKED WITH EACH UNIT  
 INSTALLATION GUIDE WITH REFERENCES TO NEMATRON CHANGED TO SUPERIOR ELECTRIC  
 (4) MOUNTING BRACKETS AND SCREWS FROM PLASTIC BEZEL  
 WARNER ELECTRIC MANUAL #400030056
  5. UNLESS OTHERWISE SPECIFIED ALL DIMENSIONS ARE CONSIDERED REFERENCE.

UNLESS OTHERWISE SPECIFIED DIMENSIONS ARE IN INCHES DECIMALS TO 0.005 TOLERANCE ON ANGLES ± 0.005		TITLE	
PURCHASE		CONTROL PANEL SUPERIOR ELECTRIC IWS 30-SE	
GROUP NO.	PART REV	DATE	SCALE
-001	B	4-23-94	25:3600
SUPERIOR ELECTRIC WARNER ELECTRIC 383 MIDDLE STREET BRISTOL CT 06010 (203)582-9551 FAX (203)589-2136		DRW'N MAM	APP'D MAM
SIZE C 222536		DATE	SKETCH
E 100%		4-23-94	1 OF 1
F 100%		4-23-94	
G 100%			
H 100%			
I 100%			
J 100%			
K 100%			
L 100%			
M 100%			
N 100%			
O 100%			
P 100%			
Q 100%			
R 100%			
S 100%			
T 100%			
U 100%			
V 100%			
W 100%			
X 100%			
Y 100%			
Z 100%			

GROUP NO.	PART REV
-001	B

GRAPHICS TO READ SUPERIOR ELECTRIC.  
SEE SUPERIOR ELECTRIC DRAWING 222898-001

PANEL CUTOUT